

BLOCK 7 FIVE ACRE PLAT A

THE THOMAS L. WILLIAMS ESTATE SUB.

BLOCK 1, LOTS 1-3 & 11-16

BLOCK 2, LOTS 1-6 & 23-27

27-1

TAXING UNIT: 25

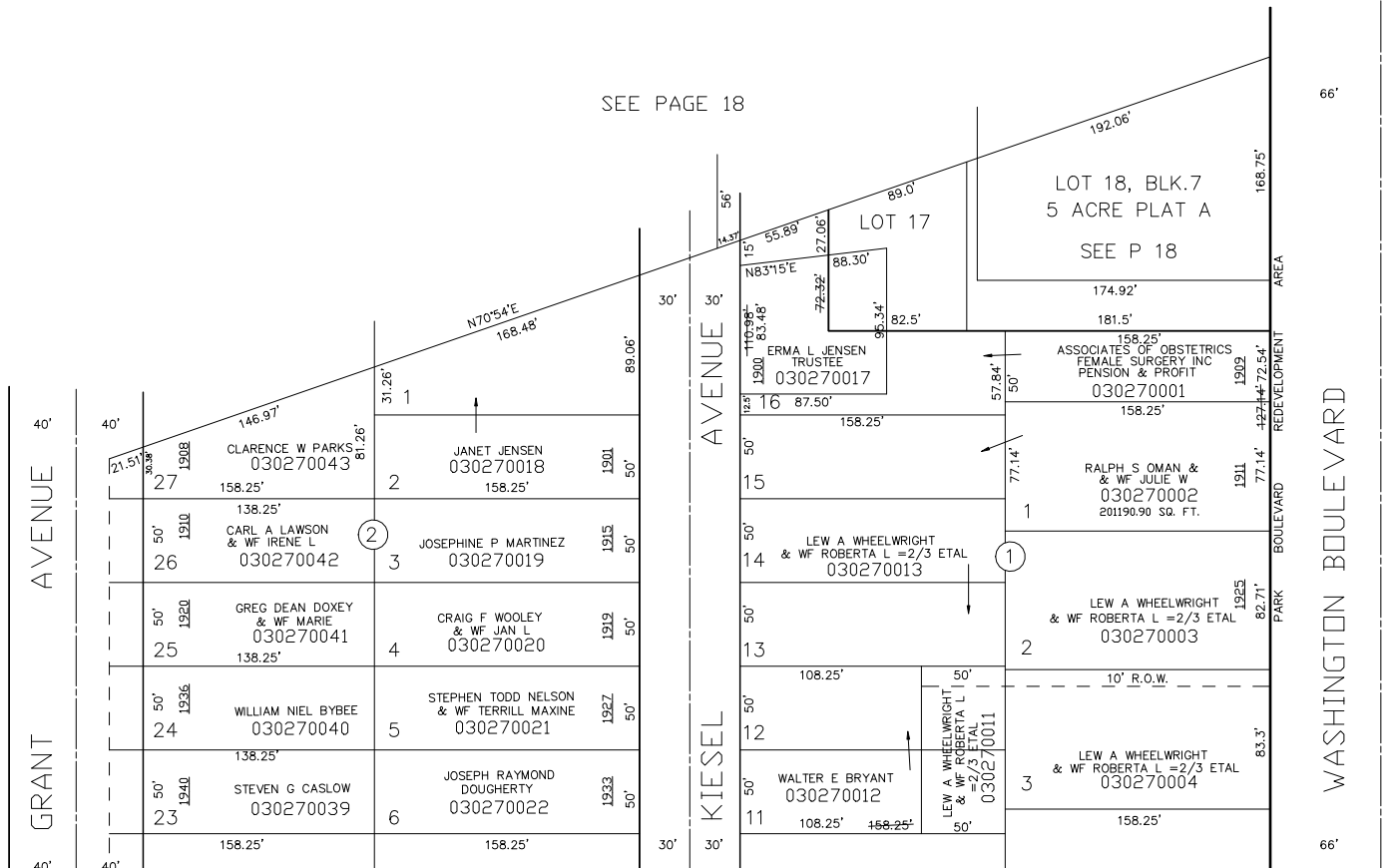
IN OGDEN CITY

SCALE 1" = 60'

SEE ALSO PAGE 27-2

SEE PAGE 18

SEE PAGE 37



SEE PAGE 38 FOR BLOCK 3
OF THE THOMAS L. WILLIAMS
ESTATE SUBDIVISION

NOTE: ALL MEASUREMENTS ARE FROM
OGDEN CITY ENGR. DEPT. PLATS